

Precast Concrete Trench Drain Systems

At a Glance

- Easy Installation: no need to hang or suspend the channels
- Quick and Easy Maintenance thanks to the Patented Boltless Grate Lock System
- Available in 4", 6", 8" and 12" internal widths. Pre-Sloped channels available for 4" and 6"
- Channel Length of 19.69" (500 mm) and 39.37" (1000 mm)
- Load Classes A through F (from 3,372 to over 200,000 lbs)
- Available for all Applications: Pedestrian Areas, Sports Fields, Parking Garages, Roads, Highways, Gas Stations, Truck Loading Facilities and Airports
- Liquid Tight to EN 1433 Standard
- Enhanced Water intake through Longitudinal Slots
- ADA and Heel Proof grates available in Galvanized Steel and Ductile Iron

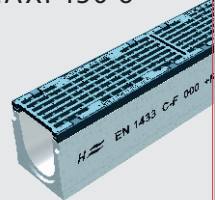
ADVANTAGES OF FIBER REINFORCED CONCRETE vs. POLYMER CONCRETE

- | | |
|---|---|
| + Less brittle than polymer concrete which drastically reduces breakage during transportation and installation. | + Low CO ₂ emission and low energy requirement in manufacturing. |
| + No need to hang or suspend the channels which, alongside HYDROTEC's patented locking mechanism, reduces time and installation costs. | + Environmentally friendly, natural building product, fully recyclable. |
| + Best of class foundation effect thanks to mass and U shape. The smooth outer surfaces guarantee best possible load transfer to the foundations. | + Non-combustible. |
| + The channels possess the same thermal expansion coefficients as the concrete encasement. | + Superior abrasion resilience compared with polymer concrete. |

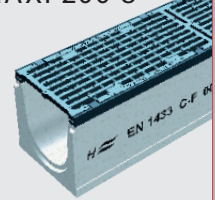
MAXI 100 4"



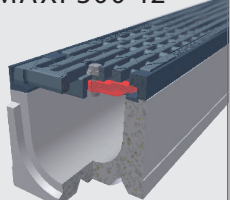
MAXI 150 6"



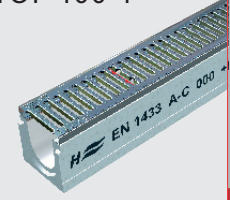
MAXI 200 8"



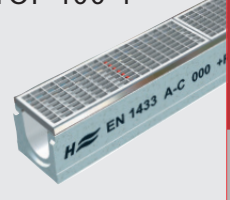
MAXI 300 12"



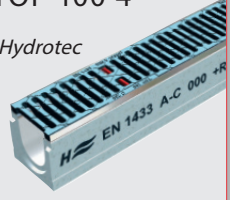
TOP 100 4"



TOP 100 4"



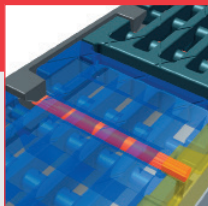
TOP 100 4"



Easy Opening and closing from standing position



Patented boltless locking system - no screws!



No "overshoot" thanks to longitudinal grating slots



Easy connection to ground pipes



Clean closure for any drainage channel

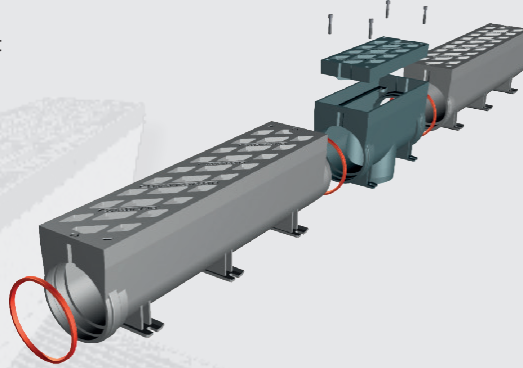


For a short video about our Trench Drain Systems go to www.youtube.com and search for Precast Concrete Trench Drain Systems SIGMA Hydrotec

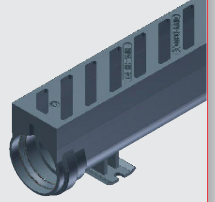
HYDROblock - One Piece Drainage Channel System - Simple. Safe.

This revolutionary, new, one piece drainage channel system sets new standards in drainage technology.

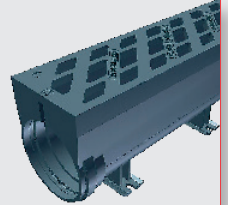
- Minimal planning and installation requirement
- Low maintenance
- Theft and vandalism protection
- Best of class frost and de-icing salt resilience
- Light weight, easy handling
- Monolithic design made of ductile iron
- Safety slot system suitable for driving over at right angles and longitudinally
- Up to 50% greater run-in diameter compared to similar systems



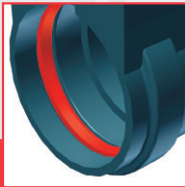
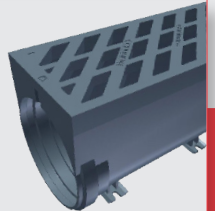
HYDROblock 100 4"



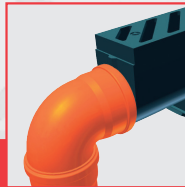
HYDROblock 200 8"



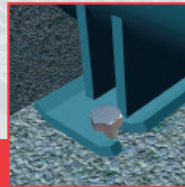
HYDROblock 300 12"



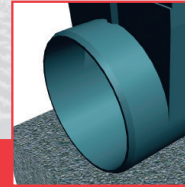
The first channel with sealing ring



Joints with standard plastic pipes



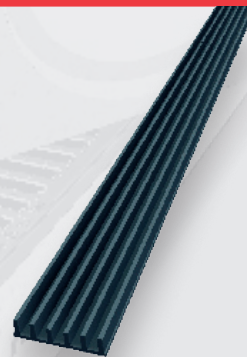
Pedestals for optional installation



Long spigot end guarantees a reliable seal

HYDROline - Flat One Piece Channel

- Low Concrete bed
- Ease of Installation
- Extremely Resistant
- Easy Cleaning
- Available in 4.72" (120mm) by 39.37" (1000mm)
- One Piece = Rattle Free
- Fixes to the concrete bed thanks to built in anchors underneath
- Load Class F (90 kN / 202,320 lbs.)



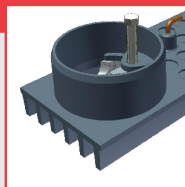
HYDROline



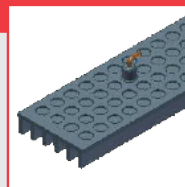
HYDROline



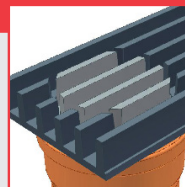
Security of grate due to bar = protection against anti-theft and vandalism



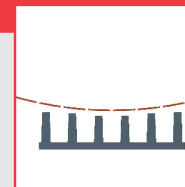
Anchors underneath help secure the channel to the concrete



Element with socket DN 100



Concave shape prevents overflow



For a short video about our Trench Drain Systems go to www.youtube.com and search for Precast Concrete Trench Drain Systems SIGMA Hydrotec